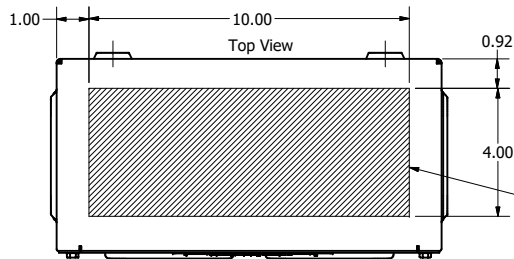
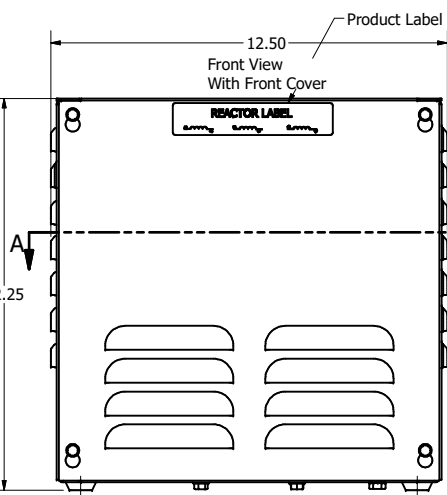


Ground Lug.  
See IOM Manual, Part# 30895  
Table S2/0, Wire Size And Torque.

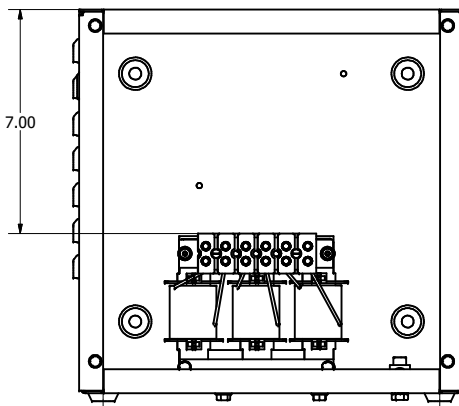
Wire Range: 4-18 AWG.  
Torque : 20 IN-LBS (2.3 Nm)



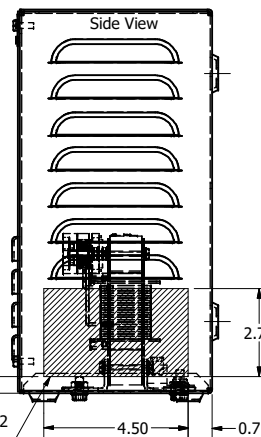
Suggested  
Customer Wire Entrance  
Top Of Enclosure.  
See Note: 6  
(Non Removeable Panel)



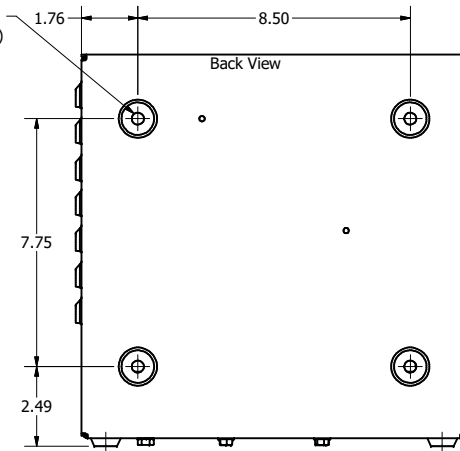
Front View  
Without Front Cover



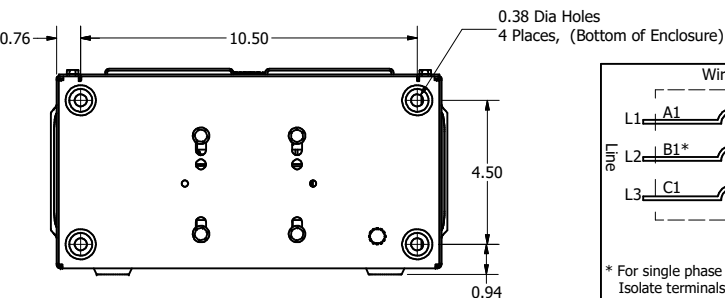
0.38 Dia Holes  
4 Places, (Back of Enclosure)



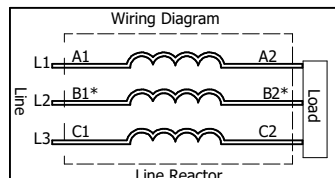
Side View



Back View



Bottom View



\* For single phase applications, use coils A and C,  
Isolate terminals B1 and B2.

Markings On  
Terminal Block For  
Reference Only.

208/240 Rated Voltage, 600 Max Voltage, High Z, Impedance.						
Part Number	Horsepower (HP)	Motor Amps (A)	Maximum Amps (A)	Inductance (uH)	Weight (LBS)	Losses (W)
KDRB25HE01	5	16.7	17	1030	18.4	53
KDRB26HE01	7 1/2	24.2	26	699	18.4	67

480 Rated Voltage, 600 Max Voltage, High Z, Impedance.						
Part Number	Horsepower (HP)	Motor Amps (A)	Maximum Amps (A)	Inductance (uH)	Weight (LBS)	Losses (W)
KDRB2HE01	15	21	27	1690	17.4	105

575 Rated Voltage, 600 Max Voltage, High Z, Impedance.						
Part Number	Horsepower (HP)	Motor Amps (A)	Maximum Amps (A)	Inductance (uH)	Weight (LBS)	Losses (W)
KDRB42HE01	7 1/2	9	10	5370	18.4	61
KDRB43HE01	10	11	11	4340	18.4	70
KDRB44HE01	15	17	18.5	2630	18.4	73

480 Rated Voltage, 600 Max Voltage, Output						
Part Number	Horsepower (HP)	Motor Amps (A)	Maximum Amps (A)	Inductance (uH)	Weight (LBS)	Losses (W)
KDRB1PE01	10	14	16	701	17.4	20

208/240 Rated Voltage, 600 Max Voltage, Low Z, Impedance.						
Part Number	Horsepower (HP)	Motor Amps (A)	Maximum Amps (A)	Inductance (uH)	Weight (LBS)	Losses (W)
KDRB22LE01	5	16.7	19	626	18.4	39
KDRB23LE01	7 1/2	24.2	25	434	18.4	48

480 Rated Voltage, 600 Max Voltage, Low Z, Impedance.						
Part Number	Horsepower (HP)	Motor Amps (A)	Maximum Amps (A)	Inductance (uH)	Weight (LBS)	Losses (W)
KDRB2LE01	15	21	30	912	18.4	65
KDRB1LE01	20	27	30	694	18.4	79

575 Rated Voltage, 600 Max Voltage, Low Z, Impedance.						
Part Number	Horsepower (HP)	Motor Amps (A)	Maximum Amps (A)	Inductance (uH)	Weight (LBS)	Losses (W)
KDRB45LE01	15	17	19.5	1590	18.4	66
KDRB44LE01	20	22	24	1280	18.4	71
KDRB43LE01	25	27	30	883	18.4	77

**TCL** (800) 824-6282 [transcoil.com](http://transcoil.com)

TCL, LLC  
Greenwood, WI, USA.  
[transcoil.com](http://transcoil.com)  
800-824-6282

208/240 Drive Reactor  
KDR - Motor Amps ---  
30A, 30/300Hz, ---V Rated, 600V Max, ---A Max, Ref 15  
480 Amp Max, 1200 Hz  
Manual #100000

UL Listed  
UL 508  
UL 508

DATE CODE

Notes:

- UL file number: cULus Listed File E116124.
- KDR Drive Reactors Comply With The Thermal and Altitude Standards Set Forth by NEMA ST20-1992.
- KDR IOM Manual Part Number 30895
- NEC Current For 208/240 Volts, Horsepower Based On 208 Volts.
- Material(s) Shall be RoHS Compliant
- Customer Is Responsible For Installation To Meet All National And Local Electrical Codes.

NO	REVISION	DATE	BY	SCALE	DATE	FILE
C	Title Block Updated, 6.75 TO 6.50	9/3/2021	DSW			
B	4686 TB Screws changed to 1/8 Hex	05/09/2019	DSW			
A	As Designed	03/07/2018	DSW			

TOLERANCES (EXCEPT AS NOTED)	
DECIMAL	.XX ± .25 .XXX ± .10
FRACTIONAL	± 1/16
ANGULAR	± 1°

**TCL** W132N10611 (Rev 1) Rev 6  
Greenwood, WI 53012  
© 2021 TCL, LLC

An Official Motors Group Company

KDR B Frame, Terminal Block  
Enclosed Type 1, Reactor Drawing

DESIGN BY: DSW DATE: 03/07/2018 FILE: 107542DG  
SCALE: 1/3 DRAWN BY: TSC SHT. OF 0

THE INFORMATION AND DESIGNS CONTAINED IN THIS DRAWING ARE CONFIDENTIAL AND THE PROPRIETARY PROPERTY OF ALLIED MOTION TECHNOLOGIES INC. AND ITS SUBSIDIARIES. NEITHER THIS DESIGN NOR ANY INFORMATION CONTAINED IN THIS DRAWING MAY BE REPRODUCED OR DISCLOSED TO OTHERS WITHOUT THE EXPRESS WRITTEN CONSENT OF ALLIED MOTION TECHNOLOGIES INC. AND ITS SUBSIDIARIES.